



Freund

MATERIAL FOR IDEAS

WORLDWIDE

100% NATURAL – SUSTAINABLE – RECYCLABLE – HIGH QUALITY AND UNIQUE – SOUND-ABSORBING



*Feel the natural environment
in your room.*

*We bring
people and nature together.*



Good design shouldn't just be visually inspiring, it should be long-lasting and ultimately recyclable too.

Sustainable and durable materials are our fascination, created by nature and carried over into living spaces. This is what inspires and drives us as a company towards ever more new ideas and applications.

As early as 2008, we were one of the first producers of moss products in Europe to kick-start the trend for natural, maintenance-free moss walls in interior spaces. The individual pictures and walls are handcrafted from 100 per cent renewable natural moss and are sound-absorbing and specifically designed for interior use.

With the addition of natural bark as a fit-out material that is not only decorative but also acoustically functional, we're expanding our approach to bringing nature into rooms. Our bark is a by-product of the woodworking industry and

is sourced from sustainably managed forests. Instead of being shredded and burnt for energy, its unique qualities are treasured and valued.

As an innovative creative company, the bark is more than just matter to us. The products it provides are a powerful means of bringing people closer to nature, whether through a little piece of nature indoors or as part of a facade.

Discover our compelling NATURE wall product materials for your next unique project.



	Page
RENEWABLE RAW MATERIALS AND CIRCULAR ECONOMY	6 – 7
Bark House® poplar bark Panels Genuine Bark House® poplar bark	8 – 17
Shingles Genuine Bark House® poplar bark packs	
Cork bark Premium panels Real cork bark agglutinated	18 – 21
Cork bark Standard panels Real cork bark on cork backboards	22 – 25
Larch bark panels Real larch bark on MDF backing	26 – 29
Birch bark panels Genuine birch bark on plywood backing	30 – 33
Gencork by Sofalca 2D and 3D cork panels in organic designs CNC-milled from pressed 100% natural cork granulate	34 – 39
OKKA pine needle panels 100% natural wall panels	40 – 41
MAGMA & FUJI charred wood Charred wood	42 – 43
WAGENSONNER COMPANIONS	44 – 47
Tree sculptures and art objects Unique works of art give trees new significance	
OTHER NATURAL MATERIALS	48 – 51
Leather for walls and floors Tiles made of genuine water buffalo leather	
FAQ	52 – 53
CONTACT	54 – 56



Bark House® poplar bark as wall cladding in office reception area, project: Luxtram depot, Luxembourg-Kirchberg, realised in collaboration with interior designer Christiane Besch (Forum a.i.), photo: Raoul Somers

FREUND GMBH: RENEWABLE RAW MATERIALS AND CIRCULAR ECONOMY

The process of feeling connected to nature, respecting it and harnessing its power – for the benefit of both humans and nature – forms a logical cycle.

Yet it is not merely a passion for nature that drives our family business but also a deeply rooted concern for ecology. Providing materials that respect people and nature, having been carefully and sustainably harvested and prepared, is a matter that is dear to our hearts.

Good design shouldn't just be visually inspiring, it should be long-lasting and ultimately recyclable too.



Our poplar bark wall cladding is the first and only product to achieve Cradle to Cradle® Certification to Platinum (2017–2018) and Gold (2007–2017) levels.

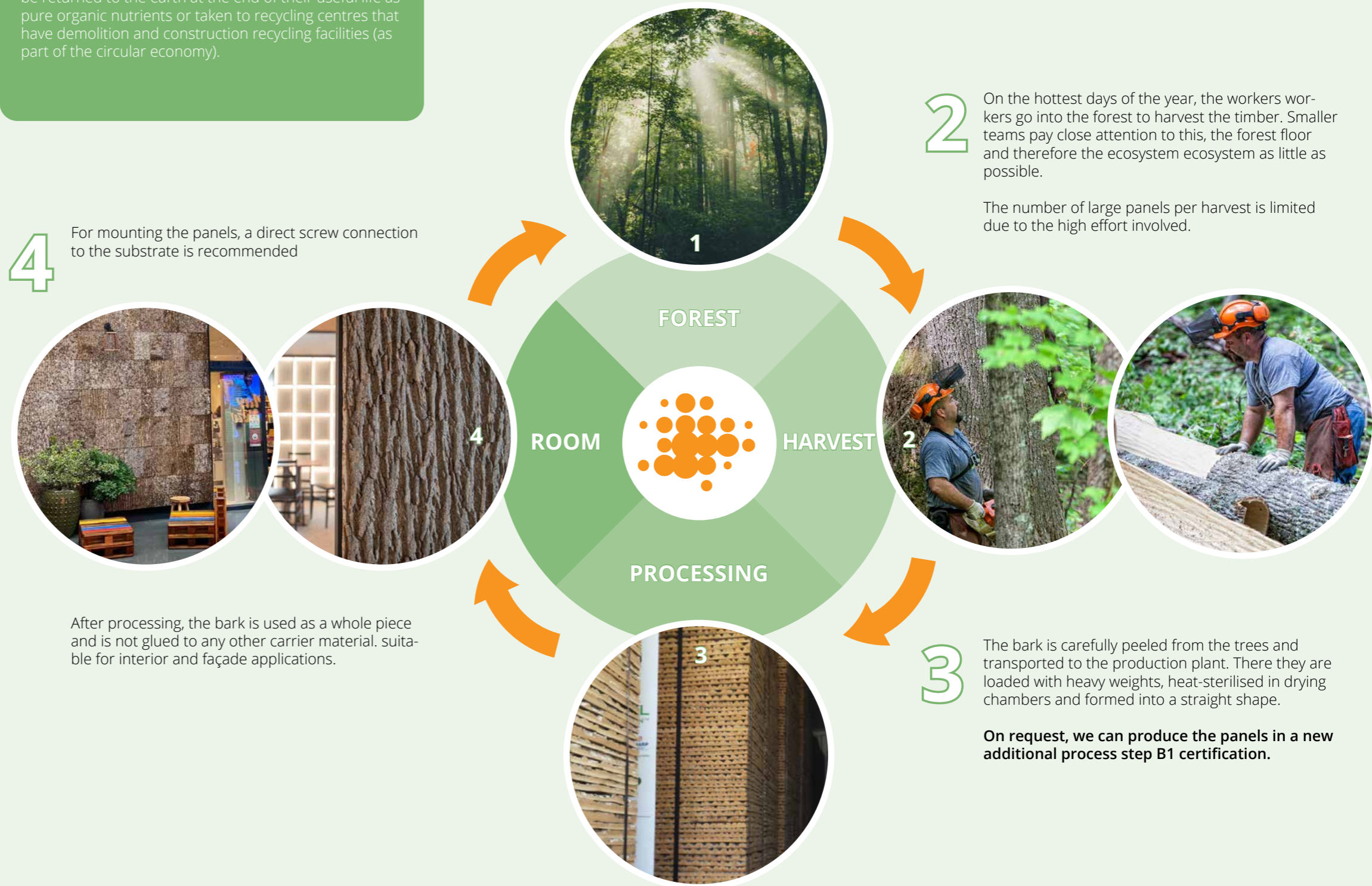
Since the wall panels have no backing material, they can be returned to the earth at the end of their useful life as pure organic nutrients or taken to recycling centres that have demolition and construction recycling facilities (as part of the circular economy).

FROM TREE TO ROOM: CIRCULAR ECONOMY USING THE EXAMPLE OF POPLAR TREE BARK

- 1 Poplars are part of the willow family and can grow to heights of 30 to 45 m.
Particularly large trees develop protective bark up to 4 cm thick (Premium version), while smaller trees have flatter bark reaching 2 cm (Standard version).

! **No additional trees are felled for our bark products!** We obtain them from low-grade wood whose bark would otherwise have been used for mulch as a by-product of the wood and furniture industry.

In the case of birch and cork bark, the bark can be obtained while the tree is still alive since the bark grows back naturally over several years.



BARK HOUSE® POPLAR BARK PANELS

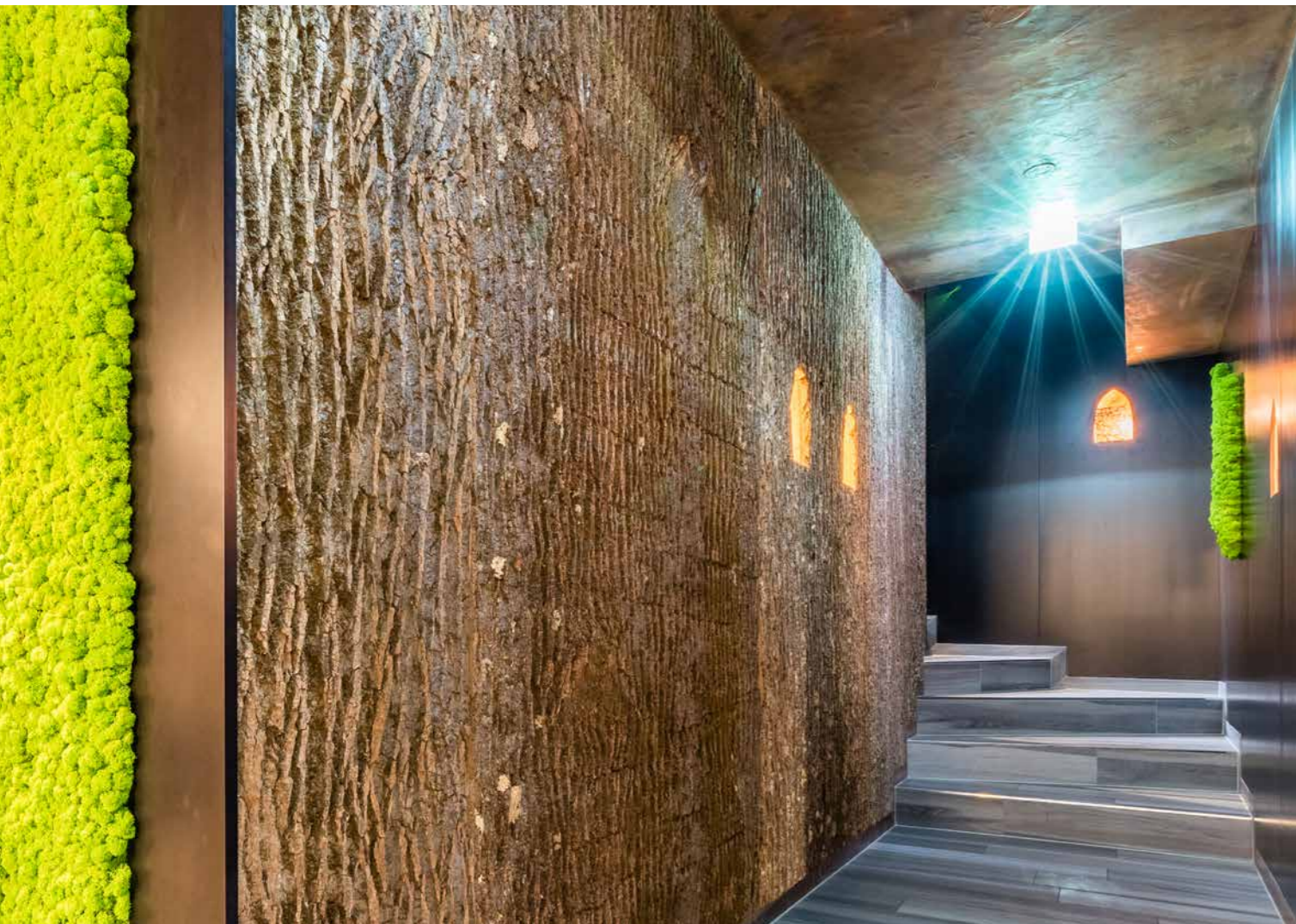
Bark House® poplar bark panels are large bark tiles, each from a single trunk, for dressing your walls. The natural material has an indescribably powerful character. Each section of bark is a rarity – a little section of nature for interior and exterior walls.

Textural differences give every panel a unique identity. Some are browner, some greyer: the different colours, running from the north to the south side of the bark, reveal the direction the tree faced during its lifetime. Limb scars, knots, growth stress, bird pecks and lightning marks mean no two poplar bark sheets are alike.

The bark's Cradle to Cradle® Platinum (2017–2018) and Gold (2007–2017) certification is particularly noteworthy, as the process involves strict and comprehensive testing. It includes third-party verification of material safety, material reuse, renewable energy and carbon management, water stewardship and social fairness.

PRODUCT INFORMATION AT A GLANCE

- Sustainable material with Cradle to Cradle® certification
- Suitable for interior and exterior use
- Every panel unique >> [Panel Overview](#)
- Easy to mount – just screw in
- Sound absorbing
- Free from additional materials (such as glue or boards)
- Large and small formats – up to 1.60 m wide, up to 3.65 m long
- Different material thicknesses (Standard/Premium)
- Can be used flat or subsequently curved
- Framing available on request
- Combines perfectly with Evergreen Premium and other moss walls



Bark House® poplar bark combined with Evergreen Premium, colour: apple green, project: MUN restaurant Munich, photo: Andreas Schwarz



Curved Bark House® poplar bark as calming wall design in health centre, project: Anima Mentis, Vienna, realised in collaboration with Rooms GmbH and Schreinerei Raab, photo: Andreas Schwarz

BARK HOUSE® POPLAR BARK SHINGLES

As an alternative to our large panels, we offer natural poplar tree bark in a convenient shingle form for your interior and exterior wall designs. With Cradle-to-Cradle® (Platinum) certified shingles, you're receiving a premium product with a holistic approach in pursuit of a healthier environment.

This product from our partner Bark House® was the first to gain Cradle-to-Cradle® Platinum certification. With good reason: the natural raw material is transformed from a previously unused by-product of the furniture industry into elegant hand-finished wall cladding and is fully recyclable at the end of its life.

Additional key factors include the utilisation of renewable energy and sustainable CO₂ management, prudent use of water resources and fair treatment of staff.



PRODUCT INFORMATION AT A GLANCE

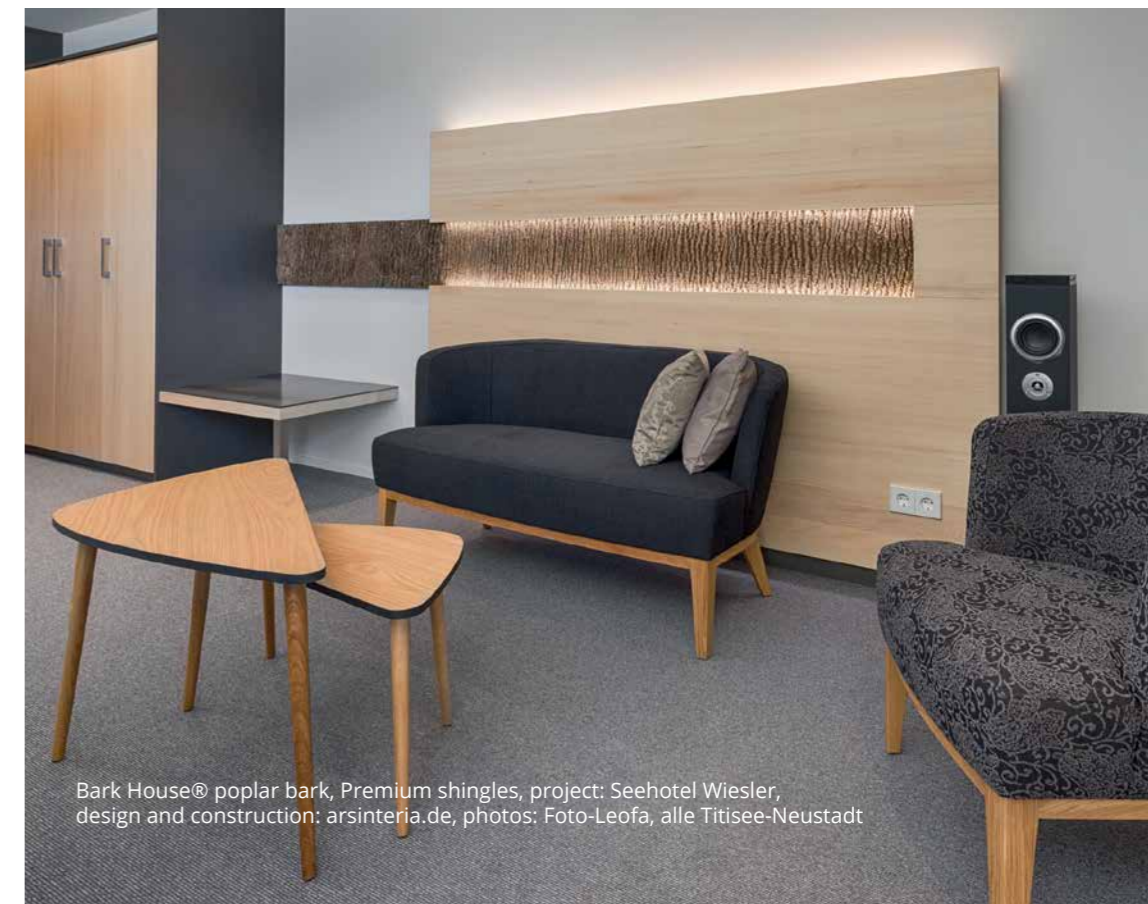
- Sustainable material with Cradle to Cradle® certification
- Minimum purchase: one pack of shingles
- One pack covers 45.7 cm x 120 cm (0.55 m², comprising multiple shingles)
- Suitable for interior and exterior use
- Height: approx. 45.7 cm, width: varies
- Easy to mount – just screw in or glue
- Sound absorbing
- Free from additional materials (such as glue or boards)
- Different material thicknesses (Standard/Premium)
- Can be combined with Evergreen Premium Moss and other moss walls



PREMIUM material thickness: approx. 2.38–3.49 cm



STANDARD material thickness: approx. 1.27–2.22 cm

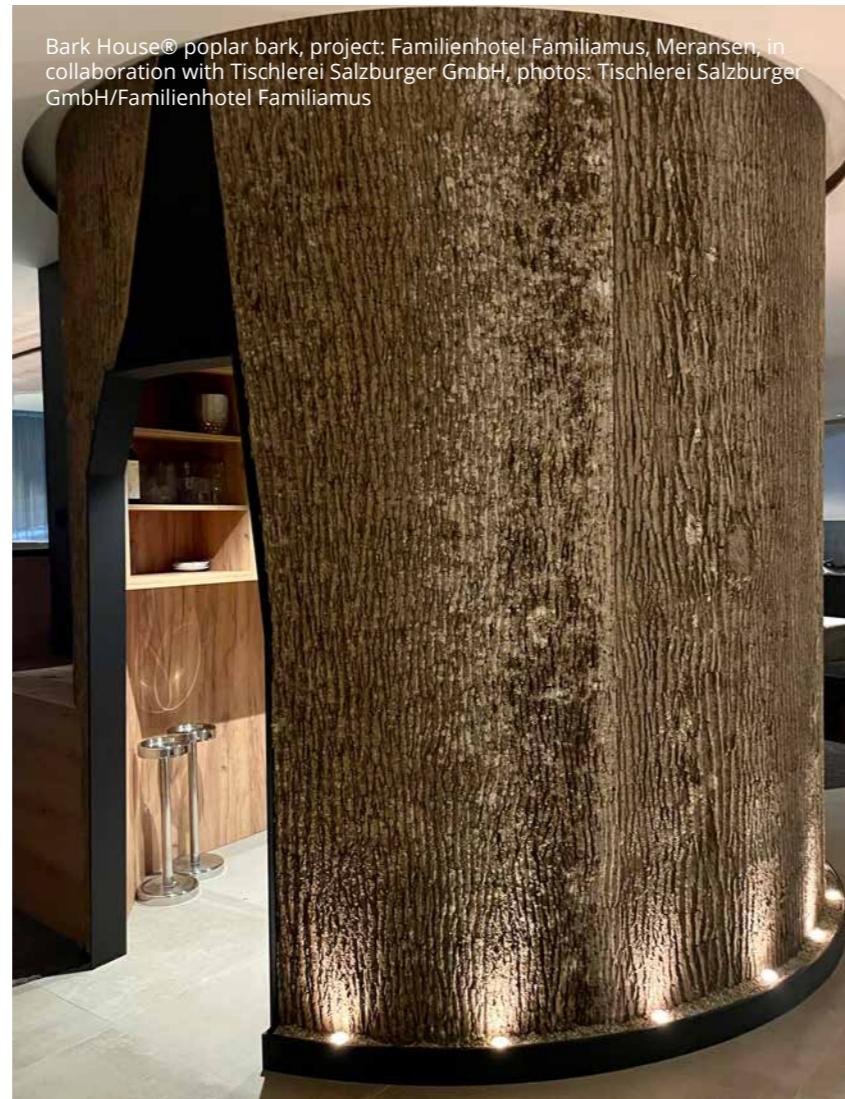


Bark House® poplar bark, Premium shingles, project: Seehotel Wiesler, design and construction: arsinteria.de, photos: Foto-Leofa, alle Titisee-Neustadt

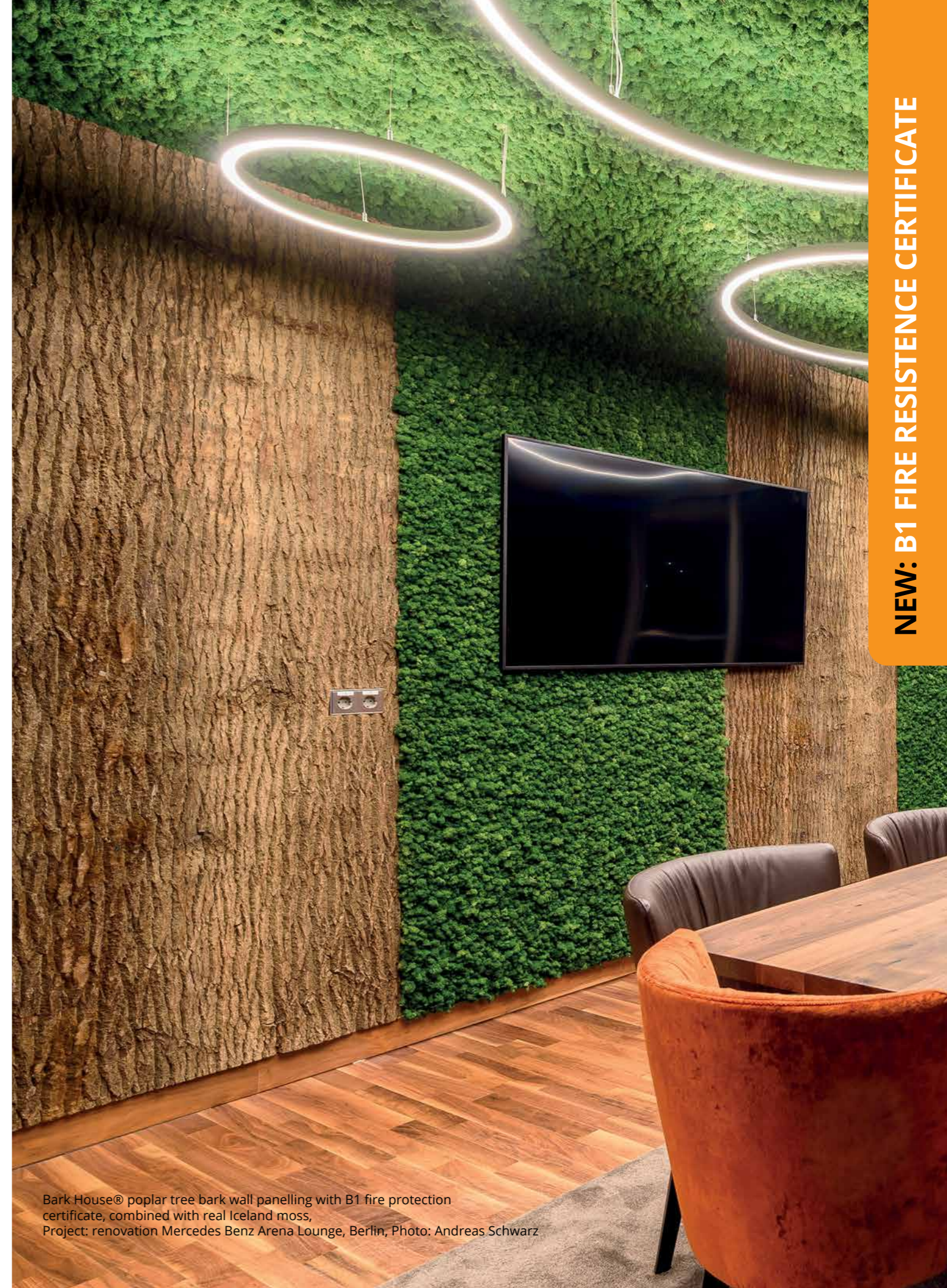
BARK HOUSE® POPLAR BARK
 ADDITIONAL EXAMPLE APPLICATIONS



Green Project, combination of moss landscapes with poplar columns
 Project: retail project for the St Louis brand at KaDeWe Berlin, design: V8designers,
 realisation/planning/execution/photo: HDW Partner GmbH



Bark House® poplar bark, project: Familienhotel Familiamus, Meransen, in
 collaboration with Tischlerei Salzburger GmbH, photos: Tischlerei Salzburger
 GmbH/Familienhotel Familiamus



Bark House® poplar tree bark wall panelling with B1 fire protection
 certificate, combined with real Iceland moss,
 Project: renovation Mercedes Benz Arena Lounge, Berlin, Photo: Andreas Schwarz

NEW: B1 FIRE RESISTANCE CERTIFICATE

BARK HOUSE® POPLAR BARK
 ADDITIONAL EXAMPLE APPLICATIONS



Bark House® poplar bark as counter cladding, project: Waldhotel Tannenhäuschen, photo: ©DOMUSimages - Alexander Rudolph



Shop design with wall panelling made of poplar bark, project: Apotheke Caunes in Burda-Park Offenburg, design/realisation: Andreas Stoellger



Bark House® poplar bark, Premium shingles, project: Hauser Kaibling Infopoint, created in collaboration with Tischlerei Kotrasch



Combination of Greenwood Jungle, Greenhill and Greenwood moss with poplar bark, project: Möbel Hesse, photo: Philip Pauke for Möbel Hess

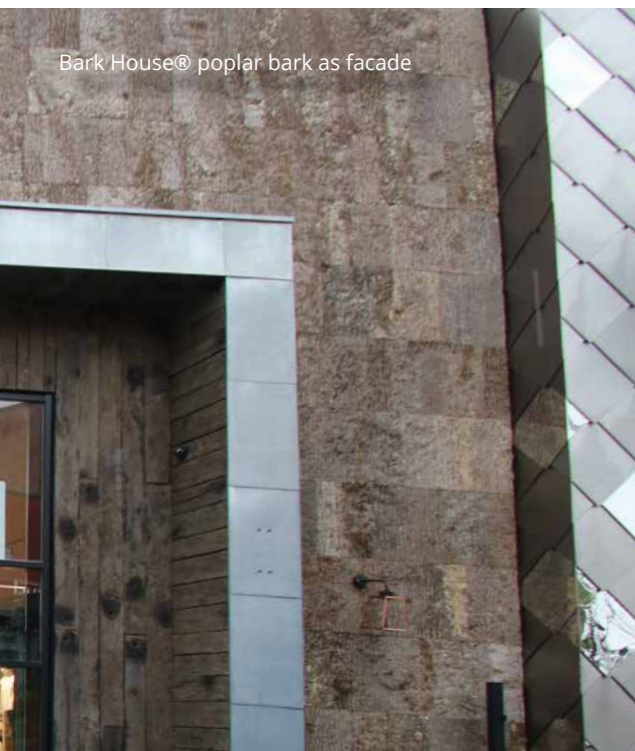


Bark House® poplar bark combined with Evergreen Premium, colour: apple green, project: MUN restaurant Munich, photo: Andreas Schwarz

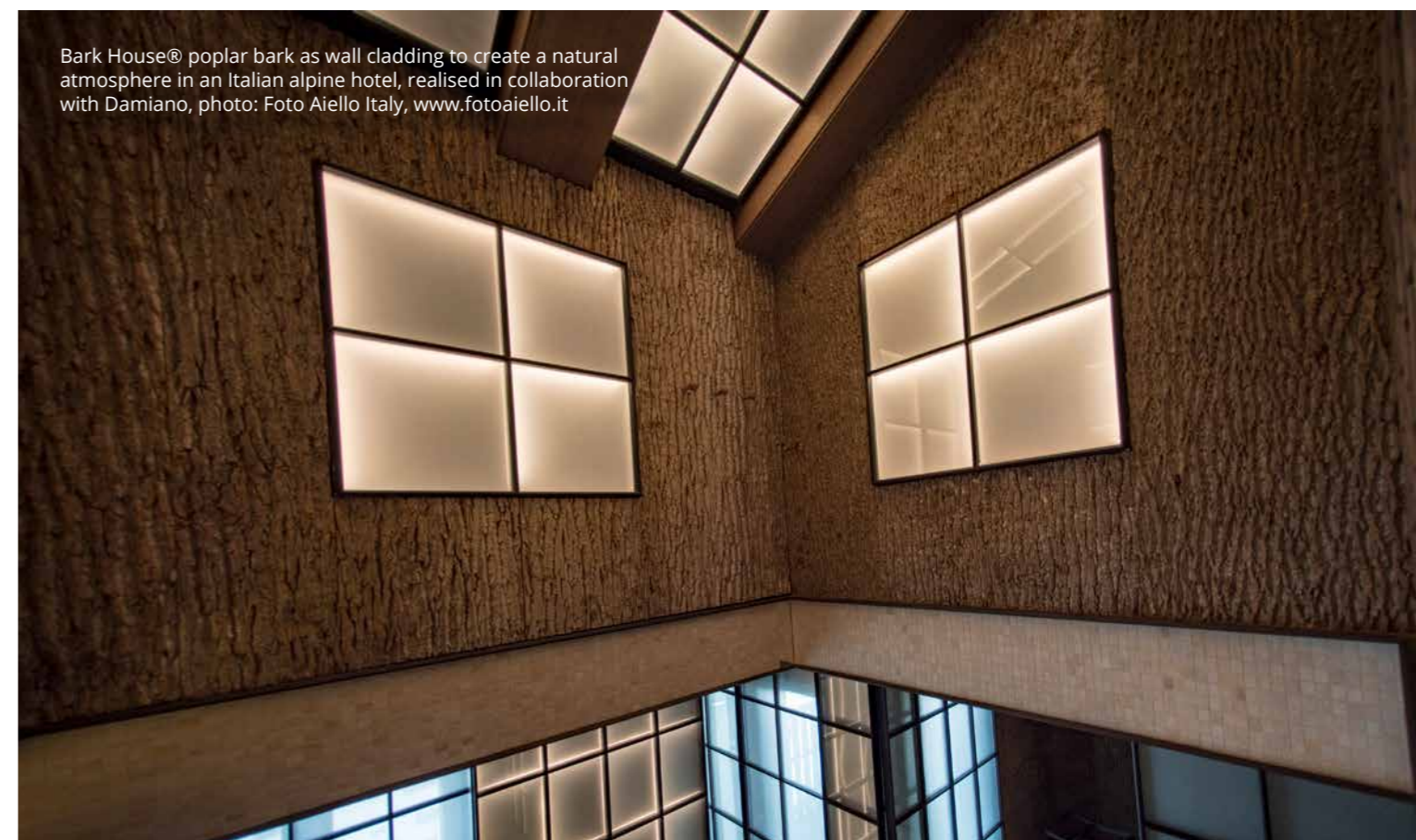
BARK HOUSE® POPLAR BARK
ADDITIONAL EXAMPLE APPLICATIONS



Bark House® poplar bark as facade material for the hermitage in Fürstenlager State Park, Bensberg



Bark House® poplar bark as facade



Bark House® poplar bark as wall cladding to create a natural atmosphere in an Italian alpine hotel, realised in collaboration with Damiano, photo: Foto Aiello Italy, www.fotoaiello.it

PREMIUM CORK BARK CORK WALLS FOR INSIDE & OUT

Another of the products in our NATURE portfolio comes from the bark of the cork oak. The surface of the cork bark panels builds on the original beauty of the natural cork material, however, keeping it as natural as possible.

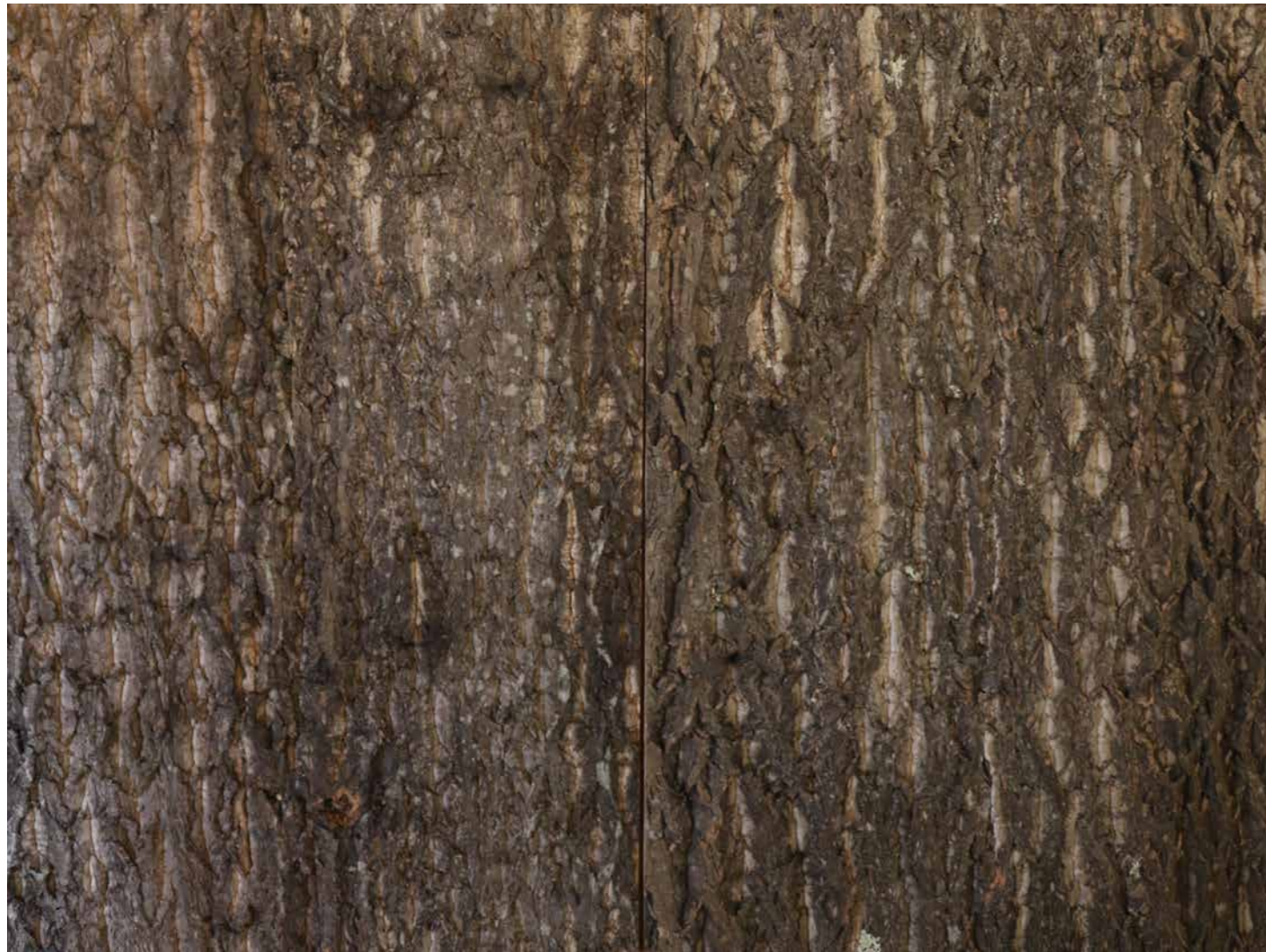
Instead of working with broken and reconstituted bark, whole intact bark is used for processing the natural material. This way, the original bark textures are largely retained, giving the product a rustic, premium character. The panels are the result of more than 15 years of manufacturing experience and ongoing improvements in craftsmanship.

The panels are waterproof and durable. They are thus suitable not only for use indoors as wall panels but also outdoors due to their resistance to weathering, high temperatures and humidity.

PRODUCT INFORMATION AT A GLANCE

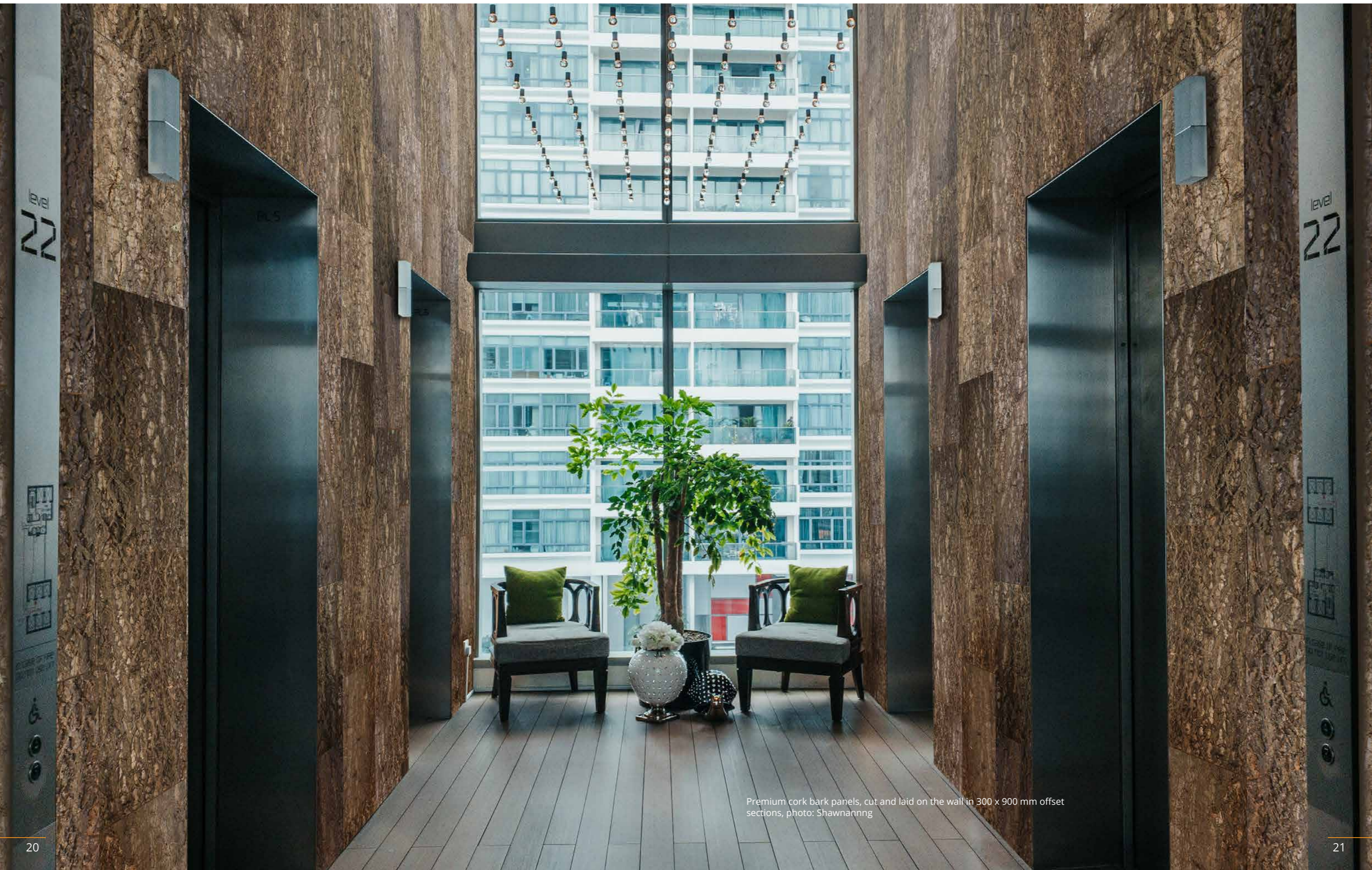
- Cork bark set whole in cork
- Bark texture throughout: surface of each panel visually resembles texture of natural bark (thus ideal alternative to Bark House® poplar bark)
- Extremely light panels
- Good insulator – stops cold and noise
- For interior and exterior use
- Available in 600x900 mm sheets
- Construction: approx. 16–20 mm
- Custom dimensions available on request
- Can be combined with Evergreen Premium moss and other moss walls
- Easy to mount – just screw in or glue

Premium cork bark, panels in 600 x 900 mm format



Premium cork bark example application,
panels cut to 900 x 300 mm size and arranged in offset pattern

PREMIUM CORK BARK
CORK WALLS FOR INSIDE & OUT



Premium cork bark panels, cut and laid on the wall in 300 x 900 mm offset sections, photo: Shawmannng

STANDARD CORK BARK CORK WALLS FOR INSIDE

Our natural cork bark has a rough contrast-rich surface texture bearing the marks of the elements over time. Its natural tones shimmer light brown to dark.

The various varnish treatments we give it produce fascinating displays of colour.

We use the bark of the cork oak to dress walls and other surfaces. It promotes a pleasant internal climate and has excellent insulating properties.

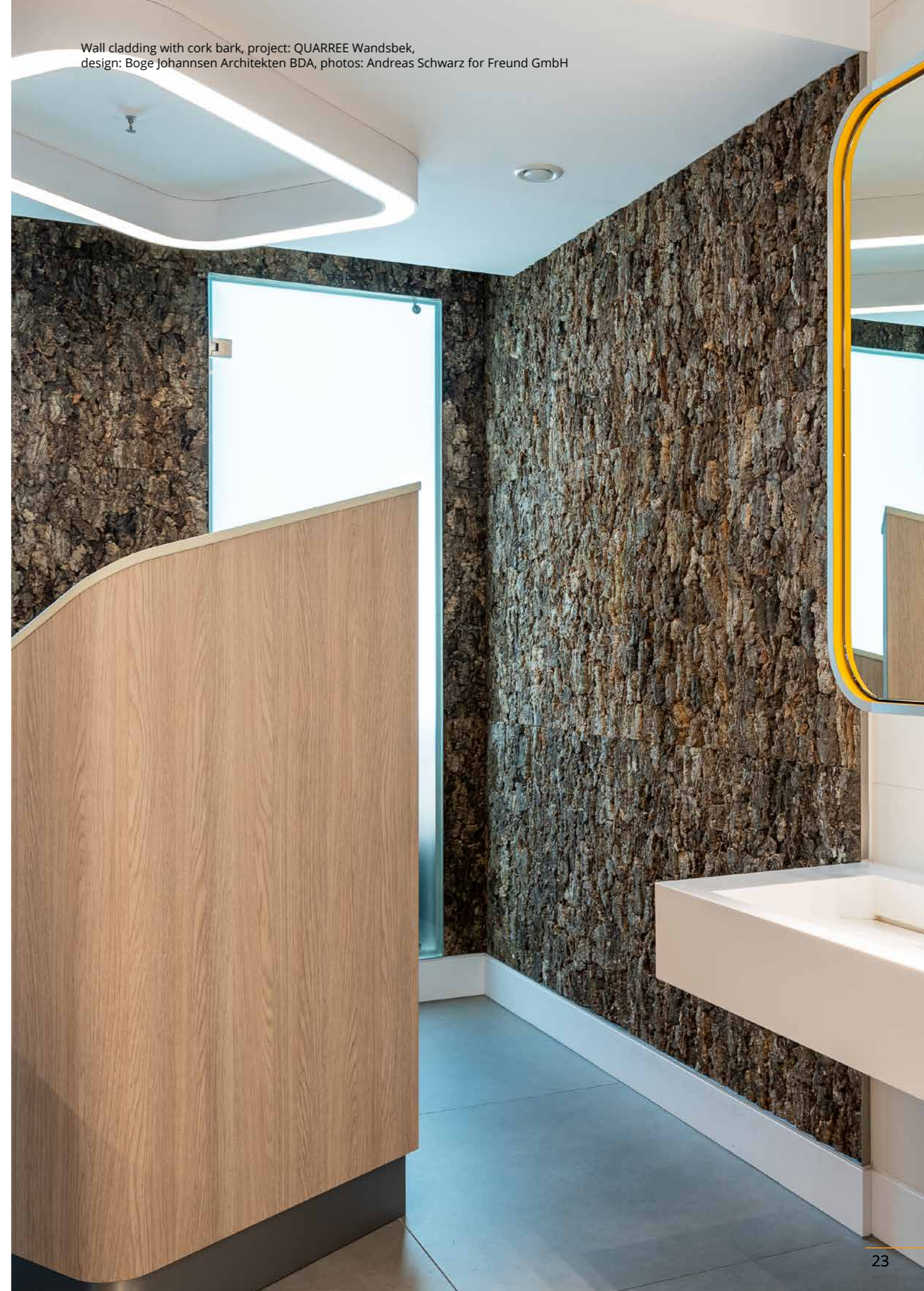
Our panels are supplied 900 x 600 mm (l x w) and help give rooms a natural feel.

PRODUCT INFORMATION AT A GLANCE

- Real cork bark glued offset on cork board support
- Very lightweight material
- Provides good insulation
- Available in standard 600x900 mm format
- Custom dimensions available on request
- Material thickness approx. 30 mm incl. backing
- Combines well with moss products
- Easy to install – just screw in or glue



Wall cladding with cork bark, project: QUARREE Wandsbek,
design: Boge Johannsen Architekten BDA, photos: Andreas Schwarz for Freund GmbH



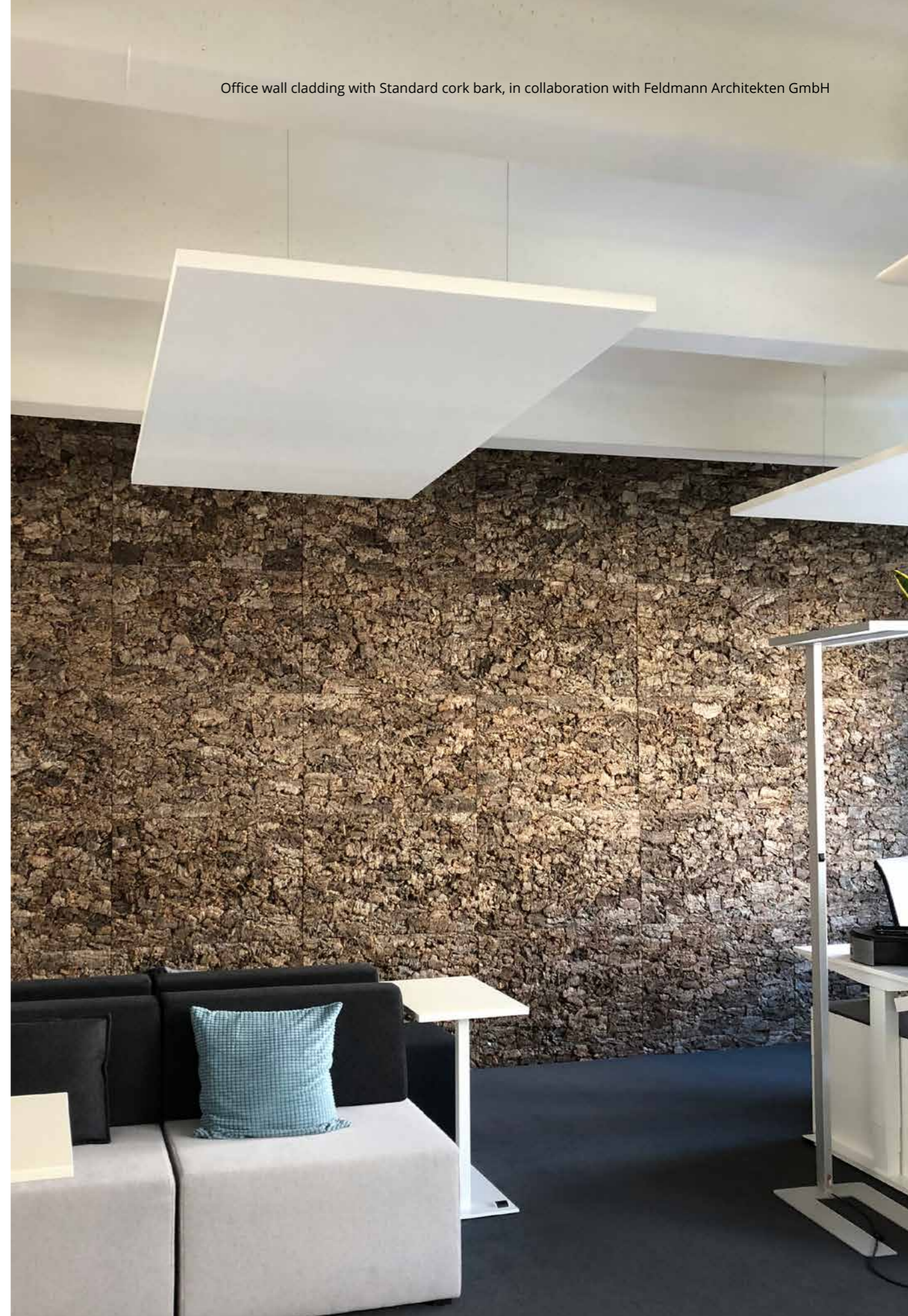
STANDARD CORK BARK CORK WALLS FOR INSIDE

Standard cork bark as sound-absorbing wall element in waiting room of Herz im Zentrum, Hanover. Photo: Herz im Zentrum



Standard cork bark as wall cladding in spa relaxation room, project: Hotel Jungbrunn – The Alpine Lifestyle Hotel, Tannheim, Tyrol, Austria, photo: Petra Stadler

Office wall cladding with Standard cork bark, in collaboration with Feldmann Architekten GmbH



LARCH BARK LARCH WALLS FOR INDOORS

Larch wood has long been a popular material for housebuilding, not just in mountainous regions. The bark of the European larch creates a sought-after effect in interior design.

Up to 100 mm thick, the bark has an earthy reddish-brown tone, punctuated by deep furrows.

Carefully removed from trees and mounted on plywood, the bark's unique appearance creates a distinctive impression on walls and surfaces. It gives rooms with a clean look and straight edges a natural counterpoint to the smooth cold materials. The warmth and radiance of the untreated surfaces creates a distinctly calming effect accompanied by a naturally woody scent experience.

For this reason, larch bark is especially popular for interior design in rustic hotel and retreat settings although it can equally be used as a premium accent feature in private homes. Whatever the environment, it's sure to provoke wonder and fascination.

PRODUCT INFORMATION AT A GLANCE

- Real European larch bark
- Standard size 1250x2500 mm (WxH)
- Custom dimensions available on request
- Easy to mount – just screw in or glue
- Material thickness approx. 30–45 mm incl. backing
- Ideal for wall cladding
- Every panel unique
- Combines well with moss products



Larch bark as wall cladding, project/photo: Sonnenberg Hotel Meransen



LARCH BARK
LARCH WALLS FOR INDOORS



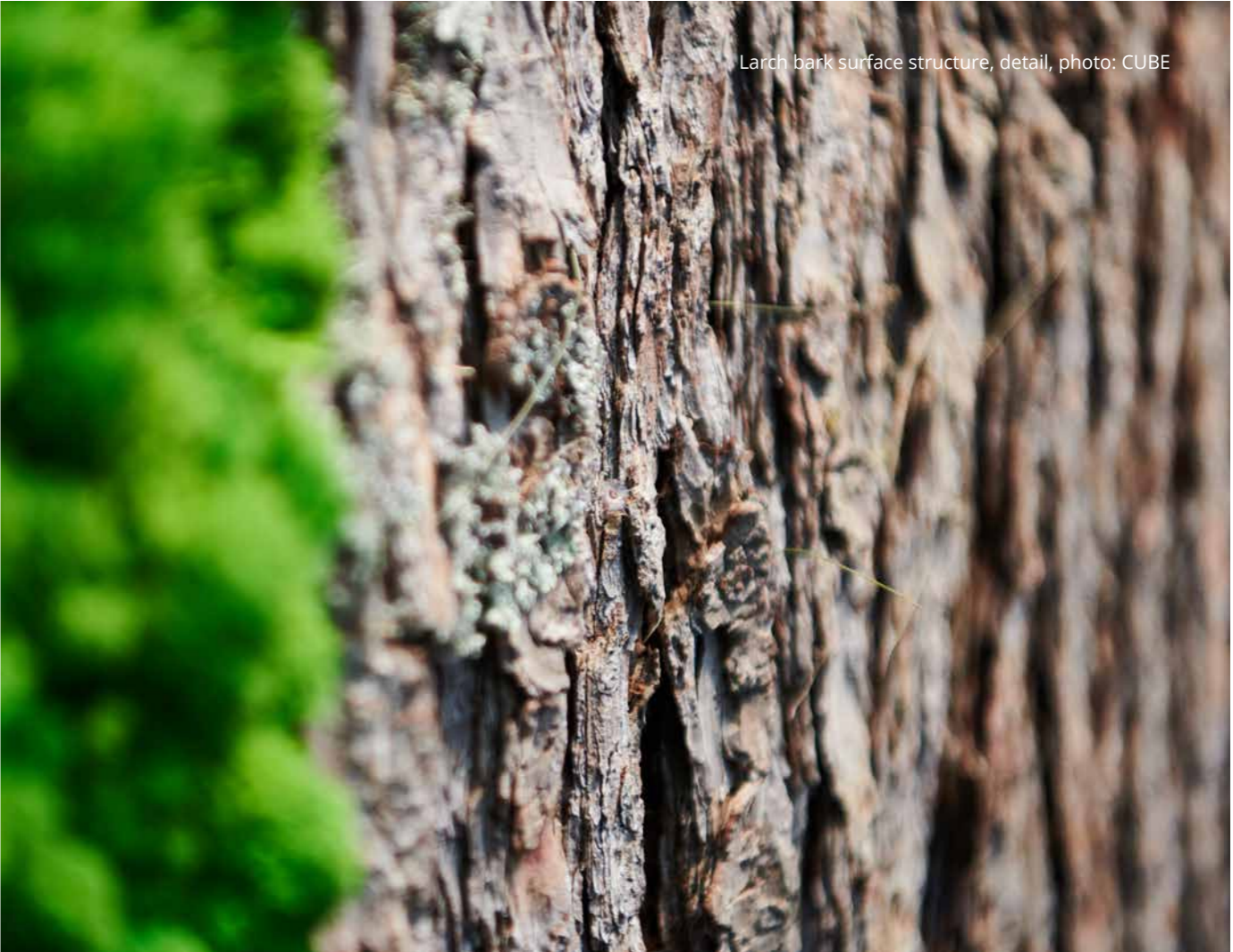
Larch bark as wall cladding, project/photo: Objekt Maria Alm



Larch bark as wall cladding, project/photo: Objekt Maria Alm



Larch bark surface structure, detail



Larch bark surface structure, detail, photo: CUBE

BIRCH BARK BIRCH WALLS FOR INDOORS

In many ancient cultures, the birch is considered a healing tree, said to possess a wealth of benefits for health. The tree's hallmark is its slender, delicate frame dressed in a robe of white bark. With its distinctive surface and supple leathery pliable nature, birch bark has been beloved by craftspeople for centuries.

The outer layer is carefully removed and used to create 480x480mm panels.

The resulting format makes it easy to clad walls and create wall art made of real birch bark.

PRODUCT INFORMATION AT A GLANCE

- Genuine European birch bark
- Standard size: 480x480mm, custom sizes and dimensions available on request
- Perfect for wall or ceiling cladding, also available as pillar cladding (on request)
- Suitable for use to provide accents in furniture construction
- Combines well with moss products
- Easy to fit – just screw in or glue



Birch bark as bathroom accent,
project: Fackelmann, photo: Lanzet Badmöbel GmbH



Birch bark as wall cladding,
Innenarchitektur - Andreas Stoellger - Düsseldorf,
BV. Hölderle-Carré Apotheke Caunes



Birch bark as furniture decoration



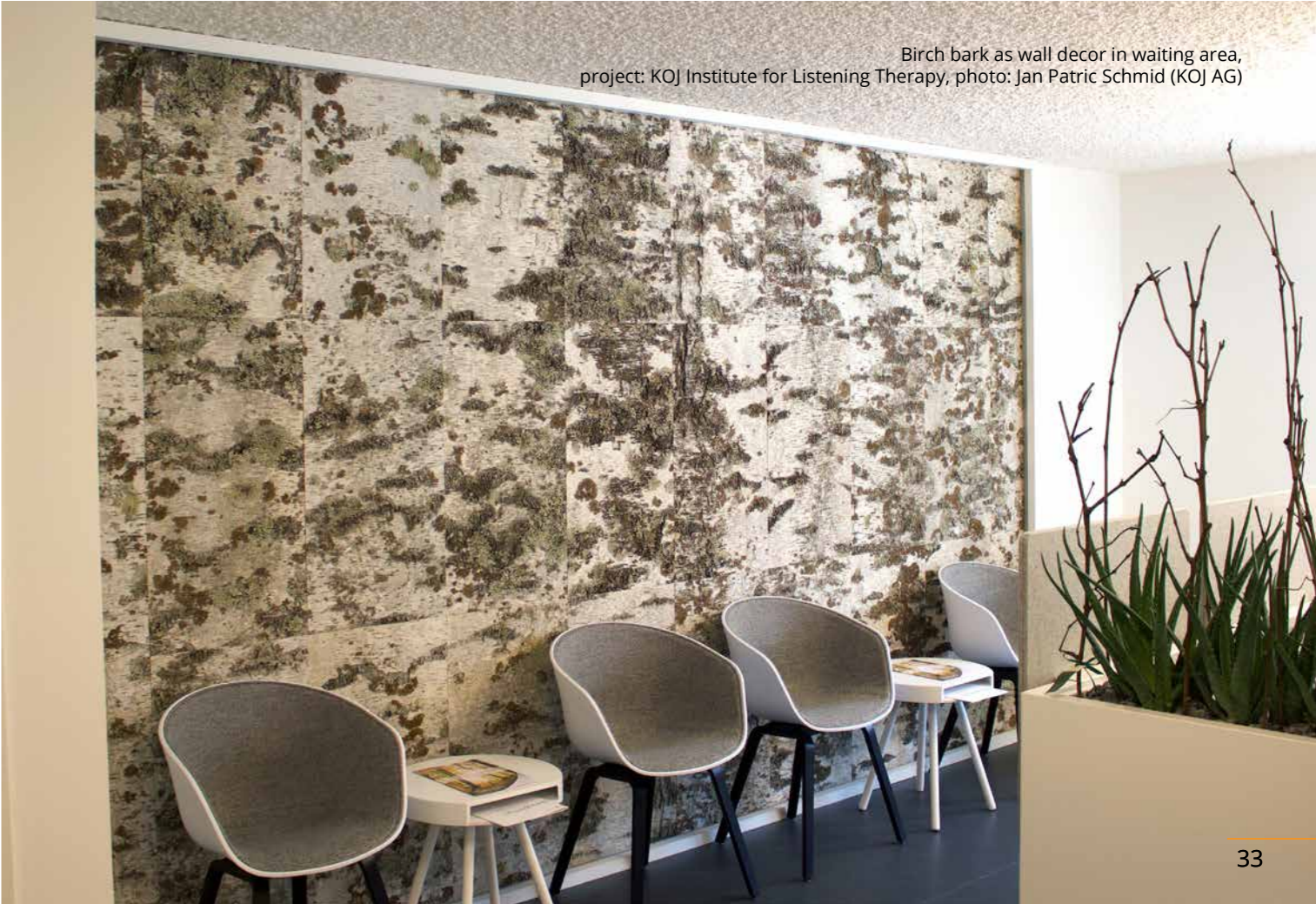
BIRCH BARK
BIRCH WALLS FOR INDOORS



Birch bark as wall decoration in Connect Sense offices, photo: Meik Terrahe



Wall picture of birch bark panels, project: Sportstudio Füssen, in collaboration with Petra Schaffarzik



Birch bark as wall decor in waiting area, project: KOJ Institute for Listening Therapy, photo: Jan Patric Schmid (KOJ AG)

GENCORK BY SOFALCA 2D/3D CORK GRANULATE DESIGNER WALLS

Cork meets generative design

GENCORK is a brand of cork solutions that explores the symbiosis between a low-tech material and high-tech processes. The 100% natural and sustainable expanded cork agglomerate is transformed through generative design algorithms and state-of-the-art digital manufacturing processes, expressing new formal aesthetics. This creative and disruptive approach optimises cork's thermal and acoustic properties and adds artistic value to conventional walls.

In our partner Sofalca Portugal, Freund GmbH is pleased to have found an excellent business offering cork wall panels in sophisticated designs – with the utmost respect for the environment.

To learn more about this innovative approach to a traditional, acoustically functional product, please see the NATURE section of our website www.freundgmbh.com.



GENCORK BY SOFALCA, various designs,
photos: SOFALCA

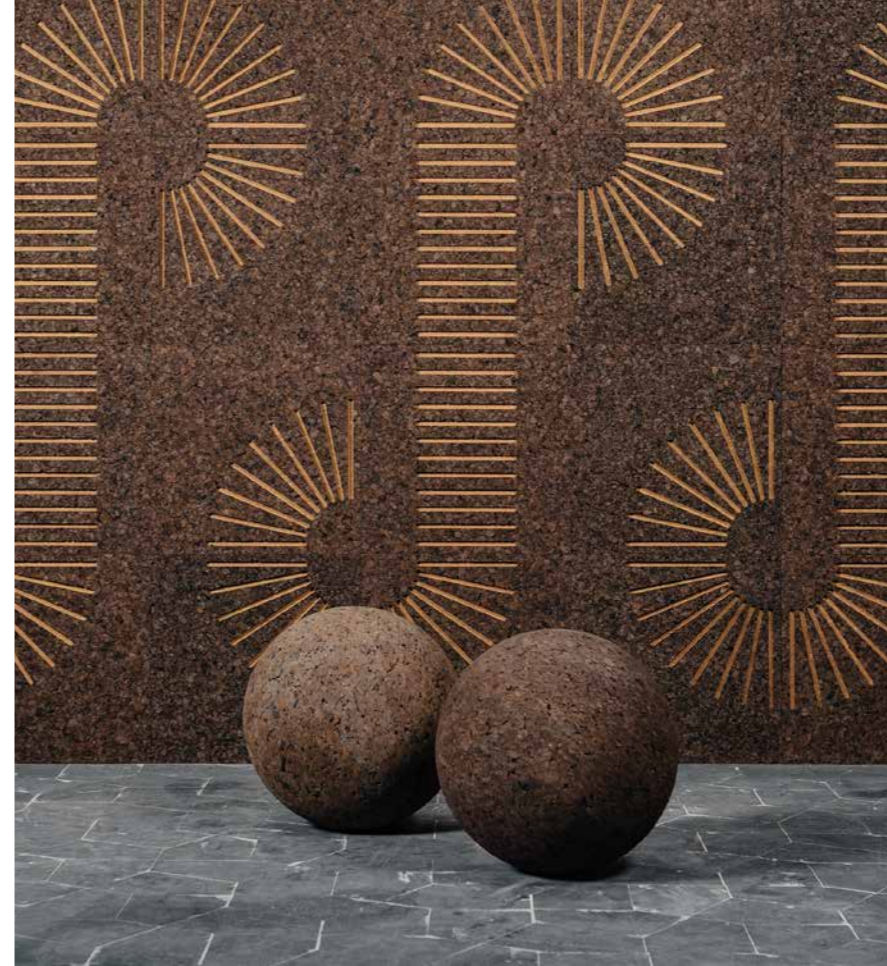


PRODUCT INFORMATION AT A GLANCE

- Made in Portugal
- 100% natural, ecological
- 100% recyclable
- 95% energy self-sufficient production
- Custom designs depending on project
- Custom dimensions available on request
- Hypoallergenic properties
- Water and weather resistant
- Preservation and respect for trees are core harvesting criteria
- Digital fabrication using CNC milling machine
- Cork colour changes when exposed to direct sunlight (UV)
- Combines well with moss products
- Individually numbered designer wall panels easy to fit by screwing or bonding



GENCORK BY SOFALCA
2D/3D CORK GRANULATE DESIGNER WALLS



GENCORK BY SOFALCA,
various designs, photos: SOFALCA



GENCORK BY SOFALCA
2D/3D CORK GRANULATE DESIGNER WALLS



CORKMETAMORPH
 CORKPATTERNS
 100cm x 50cm x 3cm
 (per m²)



CORKOPTICAL
 CORKPATTERNS
 100cm x 50cm x 3cm
 (per m²)



CORKICE 2D
 CORKPATTERNS
 100cm x 50cm x 3cm
 (per m²)



CORKDELAUNAY 2D
 CORKPATTERNS
 50cm x 50cm x 2cm
 (per m²)



CORKWIRL 2D
 CORKPATTERNS
 100cm x 50cm x 3cm
 (per m²)



CORKTESS
 CORKMORPHS
 100cm x 50cm x 10cm
 (per m²)



CORKICE 3D
 CORKMORPHS
 100cm x 50cm x 10cm
 (per m²)



CORKWIRL
 CORKMORPHS
 100cm x 50cm x 10cm
 (per m²)



CORKDELAUNAY 3D
 CORKMORPHS
 50cm x 50cm x 10cm
 (per m²)



CORKBIOMORPH
 CORKMORPHS
 100cm x 50cm x 10cm
 (per m²)



CORKVECTORS
 CORKMORPHS
 100cm x 50cm x 10cm
 (per m²)



CORKBLACK ON WHITE
 CORKTILES
 U. 50cm x 50cm x 2cm
 (4 units)



CORKBOARD
 CORKTILES
 U. 50cm x 50cm x 2/20cm
 (4 units)



CORKUNIT
 CORKTILES
 U. 49cm x 28cm x 3/6/9cm
 (9 units)



CORKHEXRAN
 CORKTILES
 U. 45cm x 52cm x 3cm
 (7 units)



CORKARC
 CORKTILES
 U. 22cm x 10cm x 1/2/3cm
 (60 units)



CORKTRIFIELD
 CORKTILES
 U. 50cm x 44cm x 3cm
 (6 units)



CORKLEE
 CORKBRICKS
 U. 20cm x 10cm x 12/7cm
 (50 units)



CORKTRIANGLE
 CORKBRICKS
 U. 30cm x 13cm x 6cm
 (34 units)



CORKAHEDRON
 CORKWALLS
 U. 50cm x 50cm x 47cm
 (per piece)



CORKAHEDRON TRILIGHT
 CORKTECHS
 50cm x 50cm x 47cm
 (per piece)

We would be delighted to provide detailed advice on integrating the different naturally inspired designs and their unique features into your project.

GENCORK BY SOFALCA, various designs, photos: SOFALCA



OKKA PINE NEEDLES FOR INDOORS

OKKA decorative pine needle sheets are produced entirely by hand. They are made exclusively of natural materials: pine needles, wood, natural adhesives and dyes.

OKKA products are manufactured in a southern Estonian workshop under the direction of masters of the trade. Every panel is unique and exceptional, prepared with love and displaying the deep attachment to nature of those who made it.

OKKA wall panels combine naturally with existing interior designs



PRODUCT INFORMATION AT A GLANCE

- Exclusively constructed of natural material
- 100% handmade
- Highly sound absorbing when the panels are supplemented with a linen felt backing panel
- Easy to mount – just screw in
- Mounting instructions supplied to ensure no visible transitions
- For use with or without frame
- Available in 7 different standard colours or optional RAL colours
- Custom dimensions available on request

Whether the wall space you're covering is big or small, OKKA panels give any interior a warm, personal note.

The composite material is fire certified to European standards. The wall panels' construction also means they constantly reduce background noise. Equipped with an optional linen felt base, the sheets are highly sound-absorbing (Class A, as certified by the Fraunhofer Institute). The product is thus equally highly suitable for both public spaces and exhibitions.

Okka pine needles can also be used effectively in private rooms, as well as in offices, hotel foyers, spas and for exhibition stands.



Wall art of Okka pine needles in light grey

MAGMA & FUJI CHARRED WOOD FOR INSIDE & OUT



Inspired by the Japanese tradition of yakisugi (preserving wood by burning), we have developed a process which gives wooden surfaces a distinguished scorched character while simultaneously preserving them.

Our special treatment gives the different types of wood we use for Magma a homogeneous appearance. Select oils, waxes or varnishes add further character to the wood, which can be combined with gold finishes or other materials depending on the project.

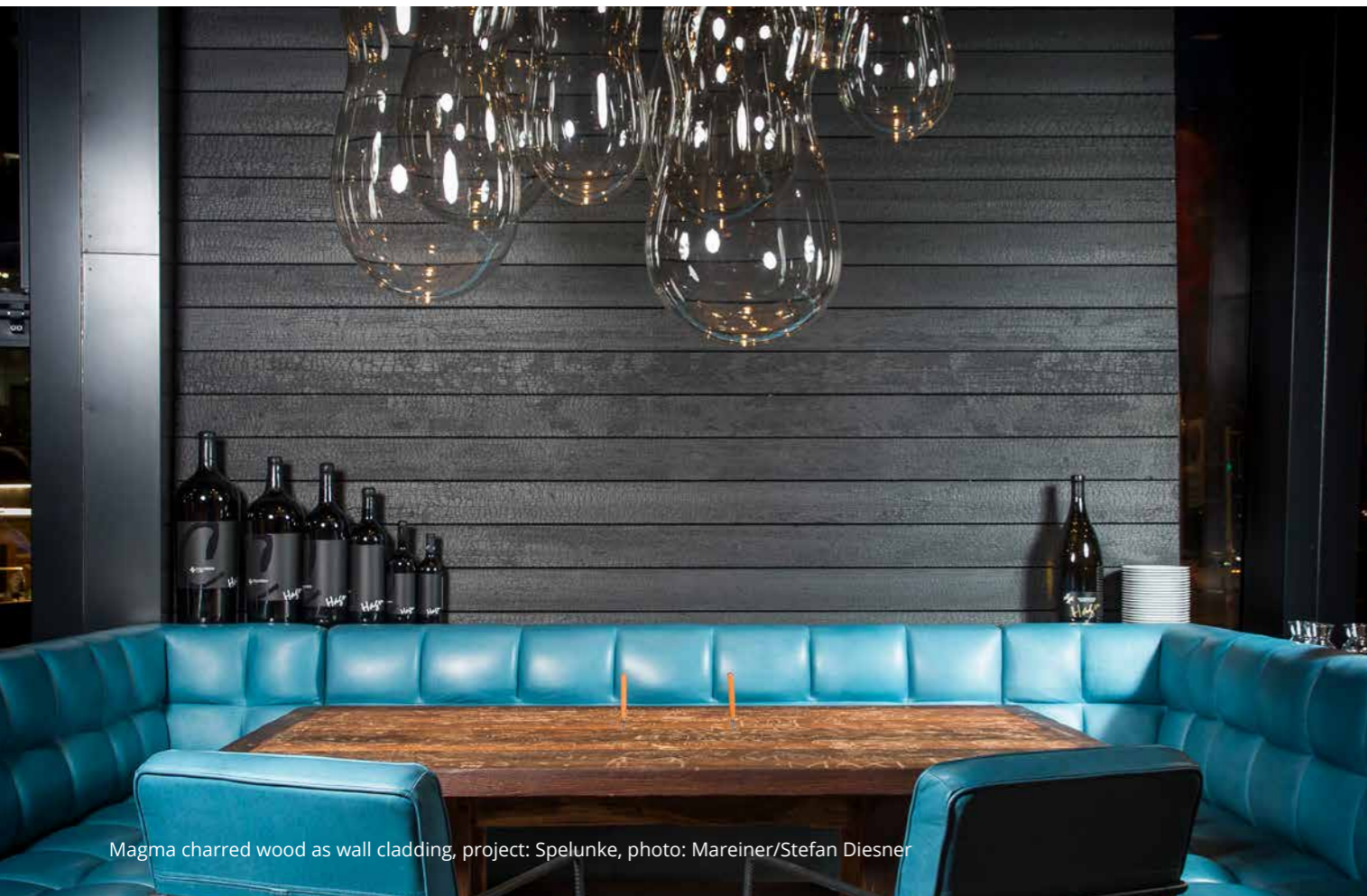
Magma boards are up to 3 to 4 m long, available in 140 mm or 170 mm widths finished/face size, and are 24 mm thick.

Our four-metre-long Fuji boards are scorched, brushed and oiled, and are available in finished sizes of 146 mm or 176 mm (for face sizes subtract 6 mm respectively). They are 19 mm thick.

Our Fuji product is less intensely charred and, just like Magma, is suitable for exterior use and for creating cosy interiors.

PRODUCT INFORMATION AT A GLANCE

- Larch wood, (intensely) charred, brushed, oiled (other woods available on request)
- Magma: Standard – 140x3000 (0.42 m²) or 140x1000 (0.14 m²)
- Fuji: Standard – 176x3000 mm (0.51 m²)
- Custom dimensions available on request
- Heat preserved, charred to varying degrees
- Combines well with moss products
- For interior walls.
Ideal for exterior use, too, with topcoat



Magma charred wood as wall cladding, project: Spelunke, photo: Mareiner/Stefan Diesner



Fuji scorched native larch, photos: Mareiner

WAGENSONNER COMPANIONS SCULPTURES AND OBJECTS

The works of Peter Wagensonner are particularly dear to us. Crafted wooden sculptures, elegant root balls and even whole trees – every object is unique. The artist discerns the wood's personality and habit and gives voice to them.

'We have to pay careful attention to the space available in a building if we want to "plant" a tree there, but the contrast provided by an outdoor piece of the right dimensions can really bring a place to life,' believes Peter Wagensonner.

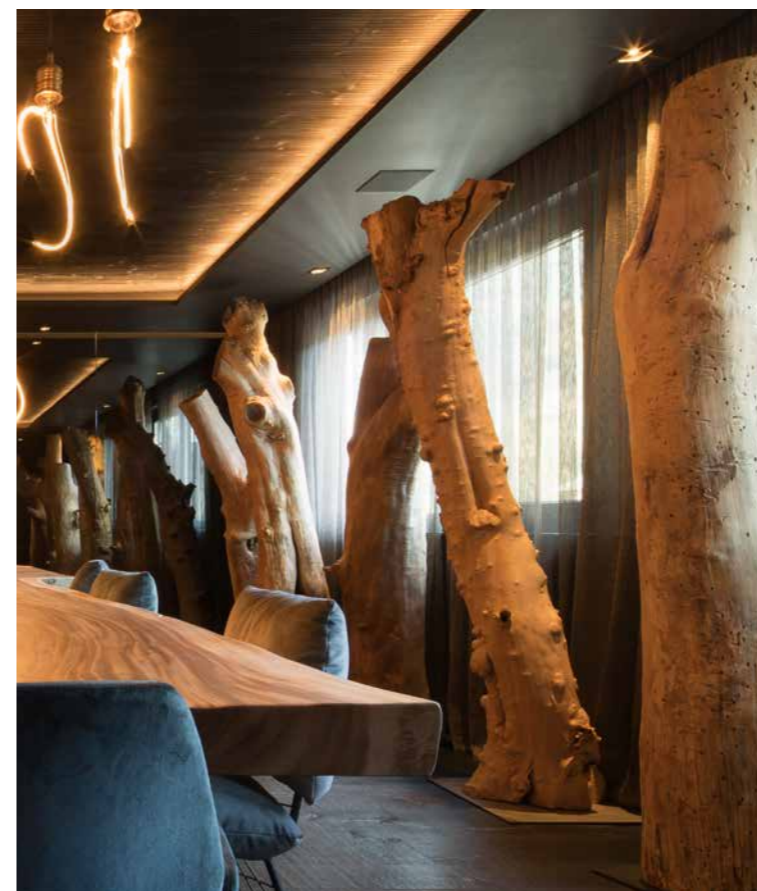
Wagensonner's sculptures – and in particular his hollowed trees – reveal in their form and shape the trees' history:

the years in which they quietly grew strong, the years they were wounded, and the forces which shaped them.

The artist exposes these forms and shows the tree in all its strength, emphasising the distinctive and dominant scars that shape individual trees as much as they do human lives.



Among his sculptures: artist Peter Wagensonner

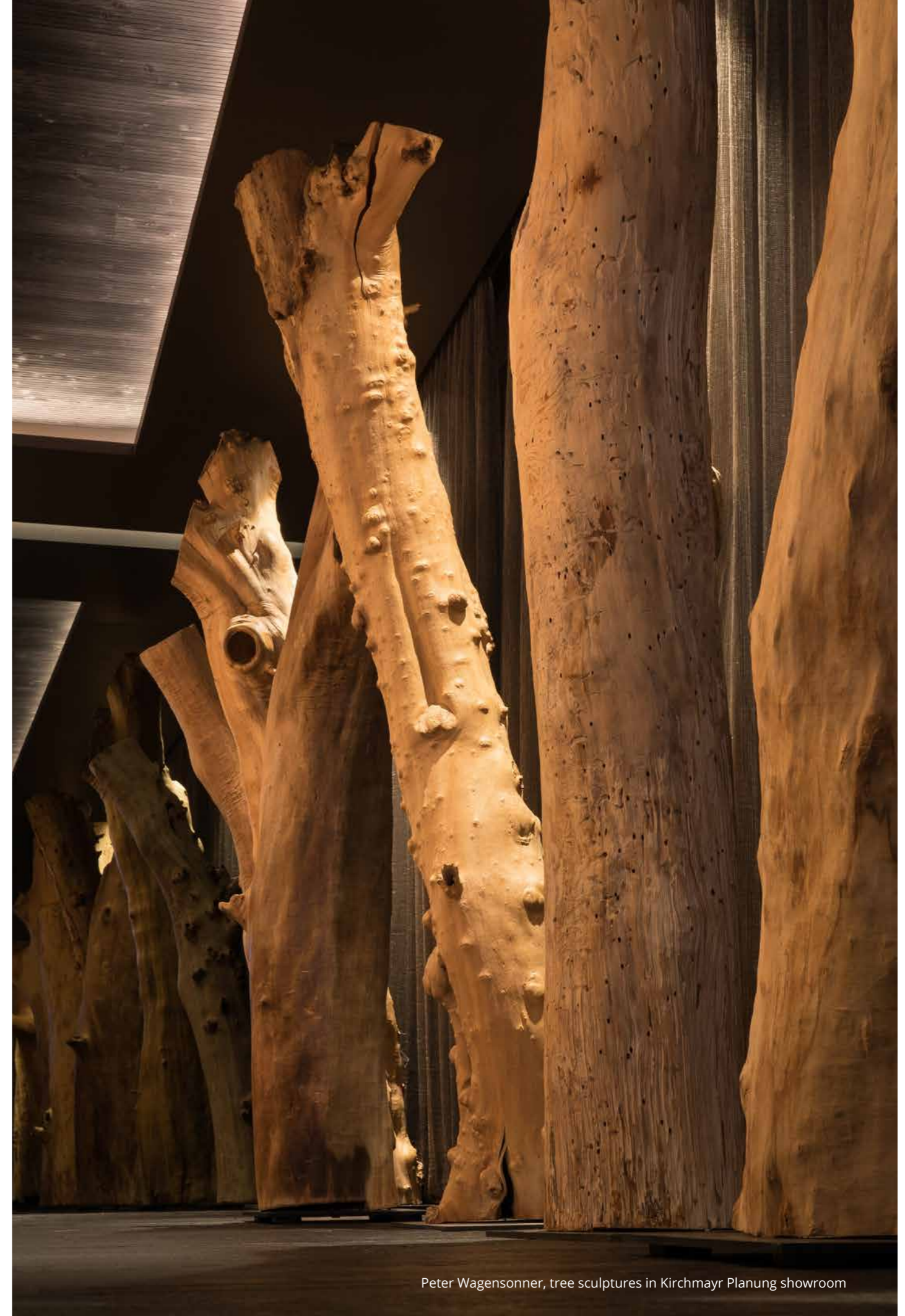


Peter Wagensonner, tree sculptures in Kirchmayr Planung showroom

WAGENSONNER COMPANIONS
SCULPTURES AND OBJECTS



Peter Wagensonner, tree sculpture for Biogena Vienna showroom



Peter Wagensonner, tree sculptures in Kirchmayr Planung showroom

OTHER NATURAL MATERIALS: **LEATHER** LEATHER TILES FOR WALLS & FLOORS

For especially exclusive surface dressings we use the best cow and buffalo leather.

As a natural material it is soft and silky yet robust. The leather products used by Freund are derived from animals that lived wild and free and are preserved using modern tanning agents. The tanning, dyeing and processing are all carried out using biodegradable agents. This way, what was once merely a by-product is converted into a biodegradable material.

Leather is considered one of the most comfortable floor coverings in the world and can also be combined with underfloor heating systems. Choose from a range of formats and designs to create unique finishes for surfaces and items of furniture. Experience soft leather surfaces and unique custom embossing.

PRODUCT INFORMATION AT A GLANCE

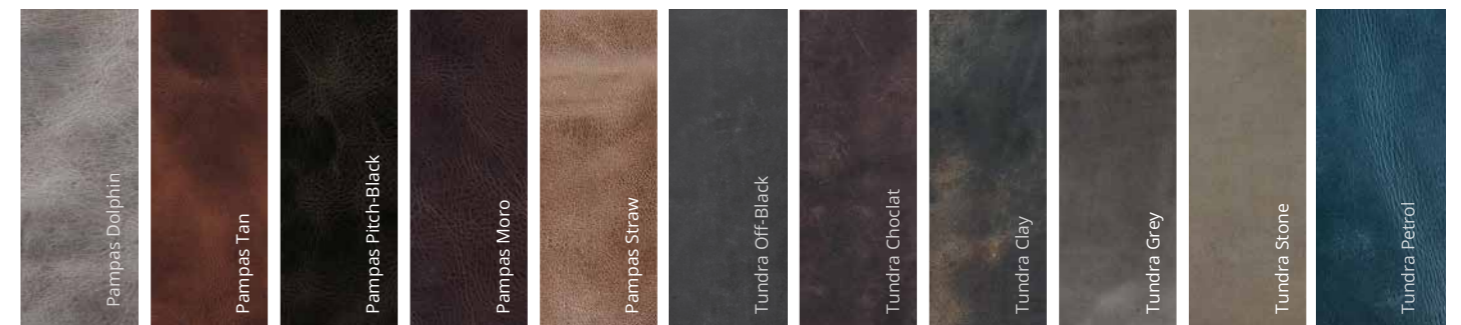
- 100% genuine water buffalo and cow leather
- Product prepared by hand
- Available in numerous colours and designs, Tundra & Pampas range, cayman/cobra embossing available
- Optional B1 fire protection on request
- Tile format in 4 standard sizes
- Custom formats available on request
- Material thickness 1.3 to 3 mm (no additional backing)
- Easy to care for
- Instructions supplied for straightforward application using adhesive



Leather tiles at Kirchmayr Planung showroom



Wandverkleidung aus Leder im Hotelzimmer, Projekt: Hotel Gerl



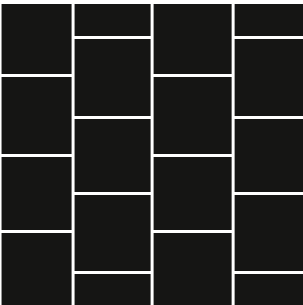
OTHER NATURAL MATERIALS: **LEATHER**
LEATHER TILES FOR WALLS & FLOORS



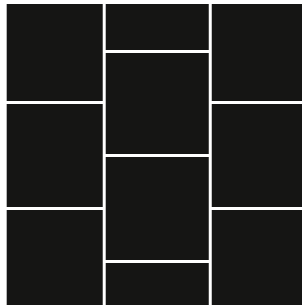
Wandverkleidung aus Leder, Projekt: Hotel Gerl



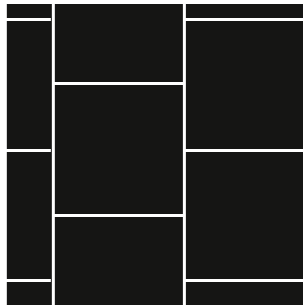
LAYING PATTERNS - STANDARD LEATHER TILE DIMENSIONS:



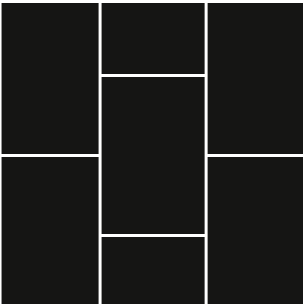
300 x 300 mm



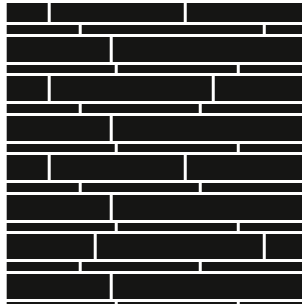
400 x 400 mm



500 x 500 mm



400 x 600 mm



Special formats on request
 (max. single tile size:
 1200 x 900 mm)

FAQ – ANSWERS TO THE MOST IMPORTANT QUESTIONS

ABOUT US

We, the Freund GmbH, bring nature into your home. As an Austrian family business with an office in Berlin, we look back on many years of experience in the field of acoustics. Our innovative manufactory for moss and plant walls is producing natural decor of the highest quality.

By extending our product catalogue with natural bark and many other NATURE materials, interior architects, planners and designers have the chance to benefit from numerous combination possibilities for high-quality interior design projects.

WHICH NATURE PRODUCTS DOES FREUND GMBH OFFER?

NATURAL BARK

BARK HOUSE® POPLAR BARK

Real Bark House poplar bark as unique panels (up to 3000mm height) or shingles.*

CORK BARK PREMIUM

Standardized panels made from real cork bark, glued
Standard size 600x900mm (WxH)* – special sizes on request

CORK BARK STANDARD

Standardized panels made from real cork bark with cork backing
Standard size 600x900mm (WxH)* – special sizes on request

LARCH BARK PANELS

Real larch bark with MDF-backing
Standard size 1250x2500mm (WxH)* – special sizes on request

BIRCH BARK

Real birch bark with multiplex carrier
Standard size 480x480mm (WxH)* – special sizes on request

MORE MATERIALS

GENCORK BY SOFALCA

2D and 3D cork panels CNC-milled in organic designs, made from natural cork granulat
Standard and custom sizes*

OKKA PINE NEEDLES

Wall panels made of 100% natural material in custom sizes*

MAGMA & FUJI GEBRANNTES HOLZ

Burnt wood, standard sizes
Magma: 140x3000mm (WxH)*; Fuji: 176x3000mm (WxH)*

WAGENSONNER „THE COMPANIONS“

Tree sculptures and objects – unique artworks

LEATHER

Tile from water buffalo leather in different standard sizes*

PRODUCT CHARACTERISTICS

ARE THE NATURE LINE PRODUCTS ALL REAL?

Yes, Freund GmbH exclusively uses natural materials in the NATURE line. All surfaces bring their typical, natural feel.

WHERE CAN THE PRODUCTS BE UTILIZED?

All surfaces are suitable for interior wall and ceiling installations and in some cases also for furniture construction. The genuine leather tiles are also suitable as durable flooring.

The robust poplar bark and premium cork bark can also be used for exterior facades.

HOW IS THE BARK TREATED AFTER HARVESTING?

After the harvest, all barks are straightened, heat-treated and sterilized in a drying chamber. The moisture content is reduced to below 10%. The bark surfaces remain untreated.

Heat sterilization ensures that there are no insects or harmful animal organisms in the wood.

ARE THE TREES SPECIFICALLY FELLED FOR BARK EXTRACTION?

No, the trees are felled to process the wood. By further processing the bark we ensure a sustainable usage of the entire tree.

DO THE NATURE PRODUCTS NEED TO BE MAINTAINED?

Apart from the leather tiles, our NATURE products require no maintenance or cleaning.

To avoid scratches, the leather floor should be cleaned of dirt with a vacuum cleaner at least once a week (suction attachment suitable for parquet). Additionally, we recommend a moist cleaning with a microfibre cloth after the vacuuming.

WHAT HAPPENS WITH DIRECT SUNLIGHT?

The surface of the bark will discolour in direct sunlight.

WHAT SHOULD BE CONSIDERED WHEN USING THE BARK OUTDOORS?

You should not place the bark in a place where it cannot dry between rainfalls. Furthermore, you should ensure that the boards are installed overlapping with a drip edge or that the outer edges are sealed to prevent the wood from rotting.

Please refer to one of our team members for detailed advice regarding what to look out for when planning outdoor installations in climate zones with extremely high humidity and temperature fluctuations.

WHAT ARE OPTIMAL CONDITIONS FOR NATURE PRODUCTS?

The relative humidity should be between 30-70%. The materials should not be installed in the immediate vicinity of a heater (or other heat source) and should ideally not be exposed to direct sunlight.

ARE THE NATURE PRODUCTS ACOUSTICALLY EFFECTIVE?

The natural surfaces all have sound-absorbing properties. Especially bark with deep structures, OKKA and Gencork improve acoustics in the room. Especially bark with deep textures, OKKA and Gencork improve acoustics in the room. For sound absorption of up to 90%, we recommend our Evergreen Moss from the GREEN product line.

DO ALL NATURE PRODUCTS LOOK LIKE THE PHOTOS?

Each product is unique due to its natural properties; there can always be deviations in surface structure and colour, also influenced by different room lighting and camera settings.

IS THERE A GUARANTEE ON THE NATURE PRODUCTS?

Since all NATURE products are made from natural materials we cannot give any guarantee on them. If you have any concerns about product longevity for a particular application, please contact us.

Especially in the bark products, slight abrasions or cracks may occur, which do not constitute a quality defect and therefore do not constitute grounds for complaint.

ARE NATURE PRODUCTS AVAILABLE WITH FIRE SAFETY CERTIFICATION?

Upon request we offer poplar and cork bark with a fire protection certificate (classified according to EU norm B-S2-d0).

DO NATURE PRODUCTS CAUSE ALLERGIES?

No, all materials are harmless to your health.

CAN NATURE PRODUCTS BE CUSTOMISED?

All bark and other wood can be cut to size for a custom-fit installation. We recommend cutting to size directly at the installation site. For optimal panelling a 45° angle mitre cut is also possible. The leather tiles can be processed with a carpet cutter.

TOLERANCES

Product dimensions may vary by +/- 2% due to the natural properties of the material.

HOW ARE NATURE PRODUCTS INSTALLED?

Installation depends on the workmanship and composition of the wall. Direct screwing to a substructure is recommended for most products.

Optionally, additional bonding to the substrate is recommended for some materials (e.g. Gencork).

The leather tiles are glued directly to a smooth, dust-free surface. Contact our team for advice on what to look out for in your project during installation.

WHAT NEEDS TO BE CONSIDERED BEFORE INSTALLATION?

We recommend that all NATURE products are stored in the designated room for at least 24 hours after receipt to allow them to acclimate before installation. Additionally, it's advisable to store the unpacked materials in the same room they will be installed in.

DOES FREUND OFFER INSTALLATION SERVICE?

Please let us know during inquiry so we can take installation into account when calculating an offer.

HOW CAN I ORDER NATURE PRODUCTS?

To receive an inquiry, please send an e-mail to office@freundgmbh.com with your contact details, the desired materials, the required measurements and other relevant details about the project.

IS IT POSSIBLE TO RECEIVE NATURE MATERIAL SAMPLES IN ADVANCE?

Most NATURE products are available as samples in 100x100 mm on request. Alternatively, you can also make an appointment and visit our showrooms in Berlin, to get a haptic impression of the surfaces.

HOW ARE THE PRODUCTS SHIPPED?

In the case of smaller surfaces/pictures, we send the products by parcel post. Panels for larger wall surfaces are shipped in individual boxes on pallets. Very large or bulky panels are carefully screwed to a wooden rack so that your goods arrive safely. Disposal of the racks is carried out by the customer.

DOES FREUND ALSO SHIP PRODUCTS INTERNATIONALLY?

Yes, we ship our products from Germany worldwide.

HOW LONG IS THE DELIVERY TIME?

The delivery time depends on product type and availability. Please discuss current availability in advance with your contact person from our sales team.

**Product dimensions may vary by +/- 2% due to natural natural material properties and environmental conditions (temperature, humidity, etc.)

GREEN · NATURE · ELEMENTS
LEARN MORE ABOUT OUR INNOVATIVE MATERIALS!

It's becoming increasingly , particularly for those based in cities, to have contact with nature. But natural materials and green plant matter bring us to life, with positive effects for our physical and mental health.

As a producer and supplier, we offer you a range of inspiring solutions for bringing real nature into your spaces. We always have our finger on the pulse of the latest trends in wall design and healthy living.

In addition to our popular bark products, our portfolio includes a wealth of other fascinating natural materials such as moss walls and wall art made from real reindeer moss,

cushion moss or forest moss. We also offer various other innovative products inspired by the patterns of nature, such as calming water walls to improve the indoor climate. Is your speciality planning and designing interior spaces? Would you like your exclusive projects to set you apart from the competition? Get in touch with us at office@freundgmbh.com

For detailed information about our natural products and creative combinations for your next interior design project, please visit www.freundgmbh.com or www.freund-greenliving.com





Freund
M A T E R I A L F O R I D E A S

www.freundgmbh.com
www.freund-greenliving.com

GOERZWERK SHOWROOM

Freund GmbH
Zweigbüro Berlin
Im Goerzwerk
Goerzallee 299
14167 Berlin
Germany

Appointments upon request
T +49 (0) 30 30 69 23-0
E office@freundgmbh.com

BERLIN CITY SHOWROOM

Freund GmbH
Wielandstraße 15
10629 Berlin
Germany

Appointments upon request
+49 (0) 30 55 27 14 70
E showroom@freundgmbh.com